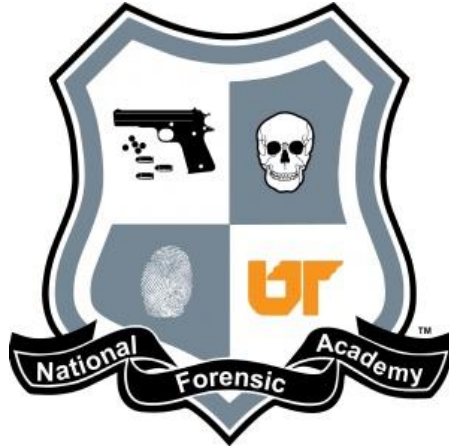




Injury and Death Investigations

“For Law Enforcement Professionals”

www.CrimminalInvestigationsTrainingGroup.com



Dr. Fred Ponce, Ph.D.

24 years City Of Miami Police Department

15 years Homicide Investigator

16 years FDLE Certified Instructor

Masters Forensic Psychology Nova Southeastern University

Ph.D. Behavioral Science Nova Southeastern University

Owner; CITGROUP

Criminal Investigations Training Group

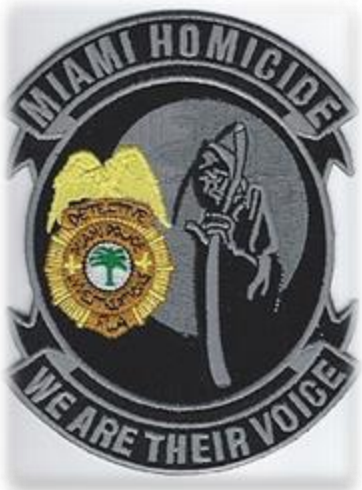
Memberships

International Homicide Investigators Association

National Homicide Investigators Association

American Academy of Forensic Sciences

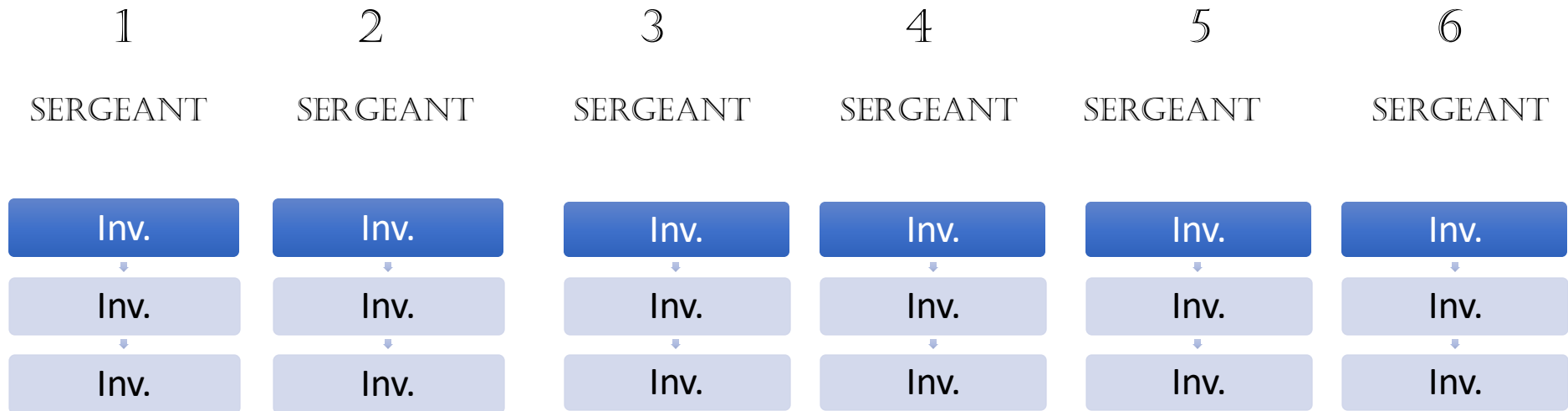
National Forensic Academy Class # 55



INJURY & DEATH INVESTIGATION

HOMICIDE UNIT CONFIGURATION

COMMANDER



INJURY & DEATH INVESTIGATION

On Scene Homicide Team

- Lead Homicide Detective
- Homicide Sergeant
- Homicide Detectives
- Crime Scene Investigators
- State Attorney
- Medical Examiner
- Patrol Officers

INJURY & DEATH INVESTIGATION

Types of Death

- Natural Deaths
- Unclassified Deaths
- Suicides
- Accidental Deaths
- Homicides; Murder, Justifiable, Manslaughter
- Police involved Shootings

INJURY & DEATH INVESTIGATION

Natural Death

Respond to Scene, examine body

Will Primary Doctor Sign Death Certificate?

Family contact Funeral service

Notification of Medical Examiners Office

No Doctor Available

Unclassified Death or Decomposed Body

Doctor has valid reason not to sign

Homicide Investigation, Body on scene



INJURY & DEATH INVESTIGATION

Unclassified Deaths

An undetermined manner of death;

- Toxicology cases
- Found human remains
- Skeleton
- Decomposed body
- Unknown medical history

INJURY & DEATH INVESTIGATION

Suicides

The voluntary and intentional taking of one's own life.

The elements of self infliction and intent should be evident.

- Victim precipitated Homicide: The participant places himself in a situation where he knows he will be killed by another person.
 - Overdose; depression
 - Stress of incurable disease, jumpers, gunshot
 - Russian Roulette: Wanton disregard for one's own life.
- Continuous risk takers.

INJURY & DEATH INVESTIGATION

Suicides

Weapon Search
Medication
Hanging
Gunshot wound
Overdose
Suicide Note
Interview Family
Interview Neighbors
Medical condition



INJURY & DEATH INVESTIGATION

Suicide



Settling of blood

CUT BELT CLOSEST TO KNOT AND
MAINTAIN RESTRAINT DEVICE
AROUND NECK TO MEDICAL
EXAMINERS



INJURY & DEATH INVESTIGATION

Suicide



Belt

INJURY & DEATH INVESTIGATION

Accidental Deaths

The unintentional cause of death
by self or another person

- Overdose
- Vehicle Accidents
- Industrial Accidents
- Structural collapse
- Slip and Falls
- OSHA (occupational safety and health administration)

INJURY & DEATH INVESTIGATION

Homicide:

Murder:

The Unlawful Killing of a human being when perpetrated from a premeditated design to affect the death and that there was a premeditated killing.



INJURY & DEATH INVESTIGATION

*INVESTIGATORS
INITIAL RESPONSE*

INJURY & DEATH INVESTIGATION

INVESTIGATORS INITIAL RESPONSE

- Event
- Notification
- Information
- Incident location
- Scene assessment
- Incident commander/ Command Post
- Media staging area
- Victim Identification
- Witness Identification
- Identify Evidence on scene
- Prepare for Investigators briefing

INJURY & DEATH INVESTIGATION

Deceased Body Examination and Procedures

- Checking Head
- Eyes
- Defensive Wounds
- Injuries
- Old Wounds
- Locate Next of Kin
- Locate Medical paperwork
- Locate Attending Doctor
- Medication bottles
- Funeral Services
- WebMD.com/drugs
- www.floridashealth.com department of health doctor search



INJURY & DEATH INVESTIGATION

Estimated Time of Death

- Witness Interviews (Establish vic timeline)
- Last seen alive
- Fire Rescue Interview
- 12/36 hours; duration of rigor mortis
- 48/60 hours: rigor mortis dissolution
- Heat speeds up rigor, cold retains it
- Decomposition begins; Depending on heat; 18/24 hours.



INJURY & DEATH INVESTIGATION

Medical Examiner at the scene

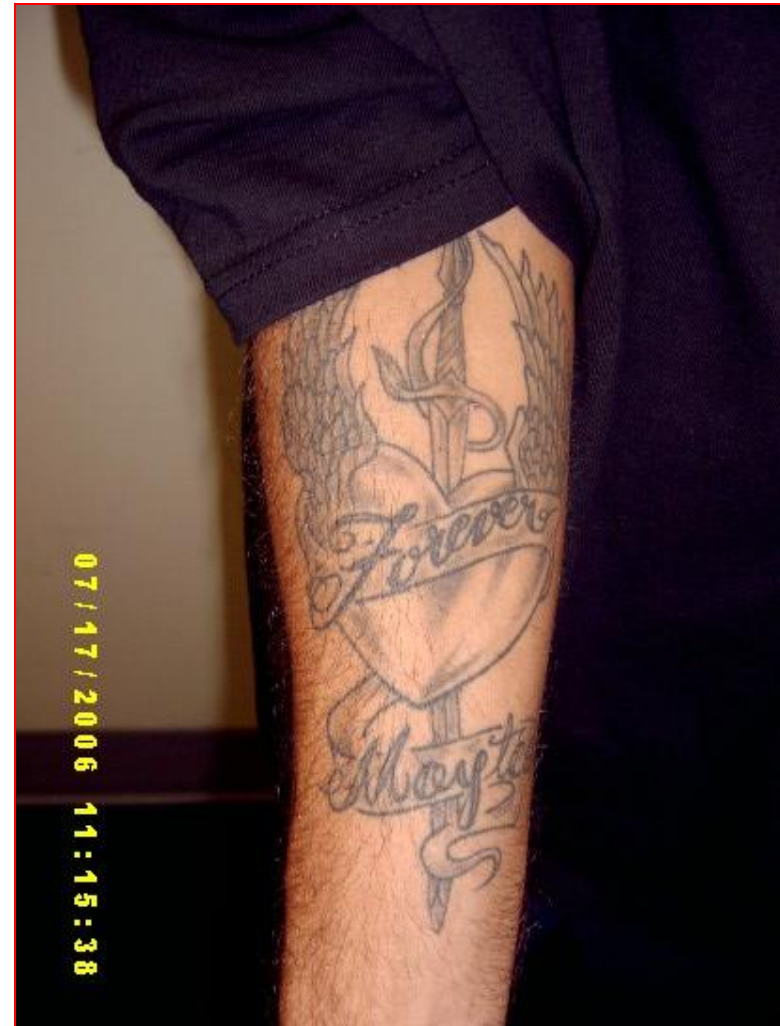
- Photographs
- Body Examination
- Locating wounds
- Removal of property
- Removal of Clothing
- Re-examining the body
- CSI
- Investigator Assistance
- Documentation
- Body Transport
- Classification



INJURY & DEATH INVESTIGATION

Identification of bodies

- Tattoo
- Scars
- old injury
- deformations
- Hair type-length
- prints taken on scene
- dental records
- Clothing worn/name brand



INJURY & DEATH INVESTIGATION

Estimated Time of Death Over 36 hours
Putrefaction

Swelling
Gasses/



INJURY & DEATH INVESTIGATION

Estimated Time of Death
Over 48 hours

slippage



Blood



INJURY & DEATH INVESTIGATION

Time of Death
Over 48 hours

Decomposed
Arterial Blood

Slippage





INJURY & DEATH INVESTIGATION

Homicide Notifications

- Supervisor
- CSI
- On Call Homicide Team
- Communications
- P.I.O.
- Command Post
- State Attorneys Office
- Medical Examiners Office
- Body Removal Service
- Next of Kin



INJURY & DEATH INVESTIGATION

Who is your victim? (victimology)

- Profession
- Habits
- Drug use
- Criminal History-
- Closest Friends
- Religion
- Gang affiliation
- Married?
- Divorced?
- Affairs
- Business transactions
- Banking
- Memberships
- Medical Condition
- Mental Condition
- Home Computer
- Phone messages
- Text messages
- Last phone calls

Crime Scene Integrity sketch



INJURY & DEATH INVESTIGATION

CRIME SCENE & THE ROLE OF THE INVESTIGATOR

INJURY & DEATH INVESTIGATION

Crime Scene & The role of the investigator

- Notifications
- Documentation
- Scene Integrity
- Identification of victim
- Scene Diagram
- Search
- CSI
- Brief with Commanders
- Brief with Homicide Team
- Scene Walkthrough
- Area canvass
- Next of Kin



INJURY & DEATH INVESTIGATION

Crime Scene Unit & The investigator

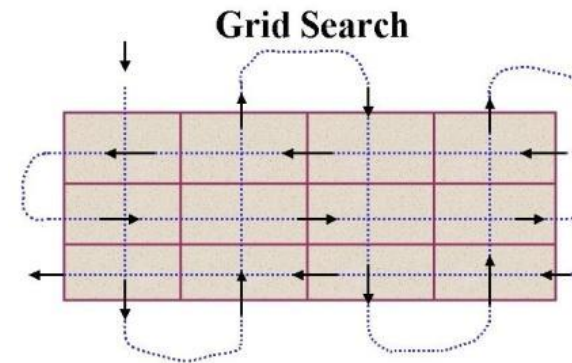
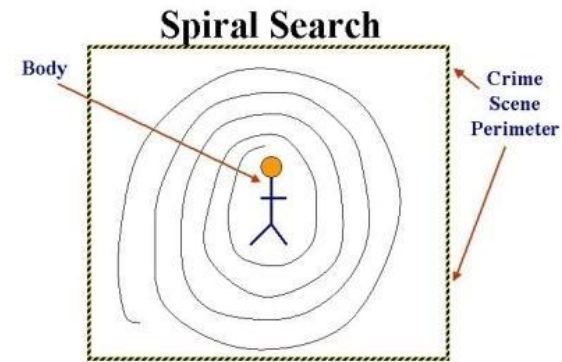
- Working relationship
- Documentation
- Scene Walkthrough
- Suggestions
- Evidence Collection
- Scene Photography
- Post scene briefing
- Suspect Pictures,
Prints, DNA, Clothing



INJURY & DEATH INVESTIGATION

Crime Scene Search

- Interior Search
- Home
- Vehicle
- Exterior Search
- Homicide Kit
- Homicide Forms
- Consent
- Search Warrant
- Spiral Search
- Grid Search
- Aerial
- Video Crime Scene
- K-9 Article search



INJURY & DEATH INVESTIGATION

Interior Crime Scene Search

- Keys
- Phone book
- Medication
- Cell Phone
- Jewelry
- Important Documents
- Forced or Unforced entry
- Trash Containers
- Weapons
- DNA
- Prints
- Clothing, Closets
- Passports
- Receipts
- Kitchen
- Answering Machines
- Novelty Magazines
- ledgers
- Note books
- Mattresses
- Refrigerators
- Bathrooms
- AC Temperature
- Missing Items



INJURY & DEATH INVESTIGATION

CRIME LABORATORY

INJURY & DEATH INVESTIGATION

CRIME LABORATORY

- Forensics
- Trace Evidence
- Forensic Identification
- Chemistry
- Toxicology
- DNA/ CODIS
- ID Latent Unit
- AFIS
- Tool marks

INJURY & DEATH INVESTIGATION

Lab Analysis

- DNA swabs / consent
- Court orders
- Fire Arms
- Evidence
- Meeting



Note: Consent forms 2 copies; one for file the other inside with DNA Swabs



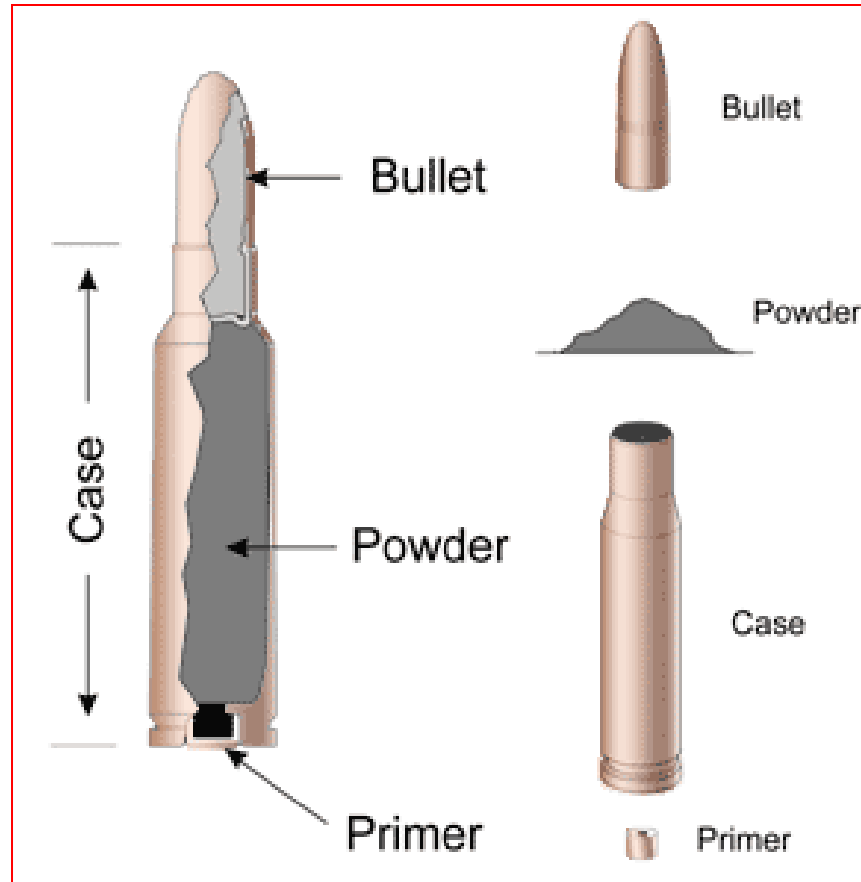
INJURY & DEATH INVESTIGATION

N.I.B.I.N.

NATIONAL INTEGRATED BALLISTIC NETWORK



INJURY & DEATH INVESTIGATION



INJURY & DEATH INVESTIGATION

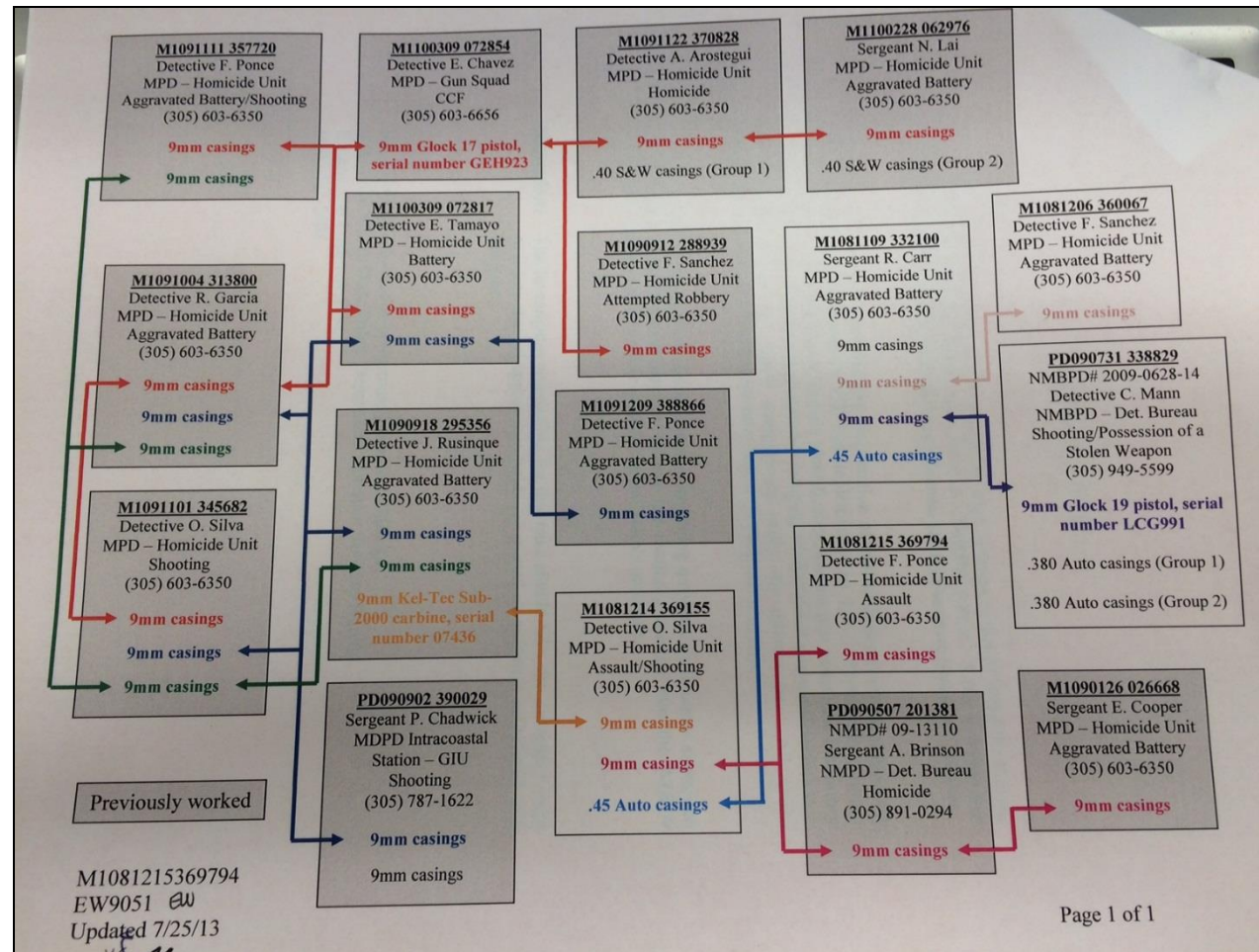


INJURY & DEATH INVESTIGATION



INJURY & DEATH INVESTIGATION

N.I.B.I.N. REPORT



INJURY & DEATH INVESTIGATION

Shoe Print Casting



INJURY & DEATH INVESTIGATION

Tool mark expert



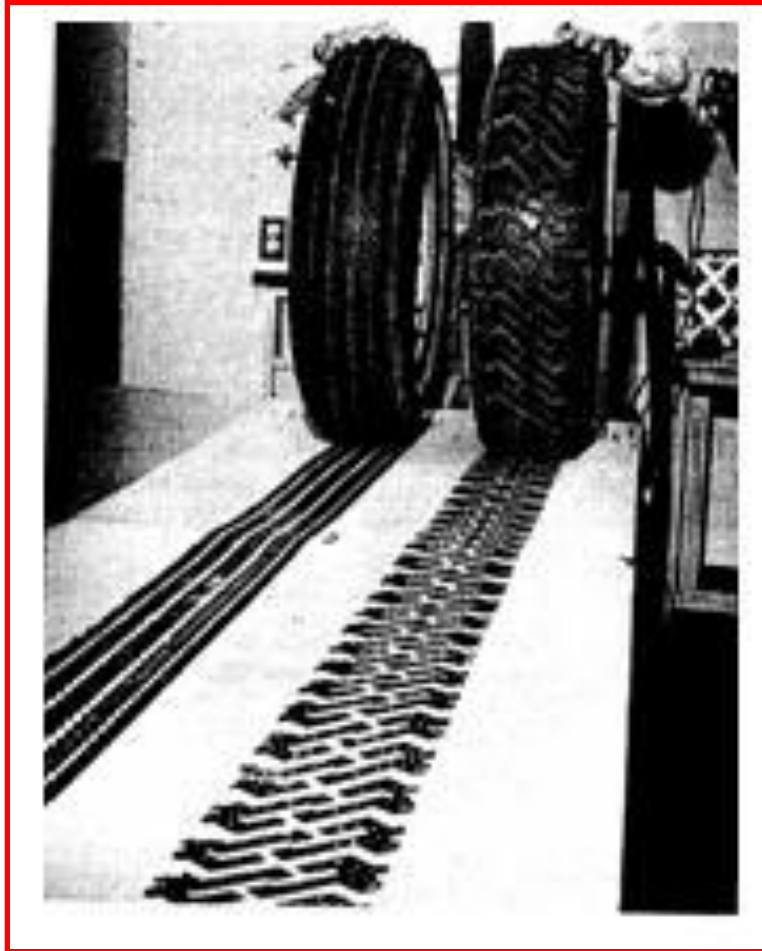
INJURY & DEATH INVESTIGATION

Tire Impressions



INJURY & DEATH INVESTIGATION

Tire Impressions



INJURY & DEATH INVESTIGATION

Clark Murder Case

Clark



INJURY & DEATH INVESTIGATION

DAY TWO



INJURY & DEATH INVESTIGATION

Follow up Investigation

- Re- Interview witness
- Re- Canvass Scene
- Tactical Operations
- Bar Checks
- Order Phone records
- RE- Examine evidence
- DNA to Lab
- Accurint / Auto Track
- Co-Defendant Arrests
- Witness Phone calls
- Media Release Family
- Sketch of offender
- Good Notes
- Interview ex-girlfriends
- Search offender arrests
- Search Incident reports



INJURY & DEATH INVESTIGATION

FOLLOW UP CONT.

- Red Light Cameras
- Shots Spotter
- Crime Stoppers.
- Sun pass tolls.
- Future Court Dates.
- Surveillance Cameras.
- Probation Officers
- Bondsman
- Children family services
- Juvenile Miami Bridge



INJURY & DEATH INVESTIGATION

Next of kin

- Next of Kin Notification
- Victims Advocate
- Contact police department in jurisdiction
- Provide information of medical examiner
- Prepare funeral arrangements
- No N.O.K. note on Medical Examiners report
- Additional follow up meeting with N.O.K

INJURY & DEATH INVESTIGATION

Reports

- Initial 301 Report
- Follow Up Daily 301 Report
- Medical Examiner
- Information Flyer/ Crime stoppers
- Wanted Flyer
- Police incident report
- Supplemental Reports

LINE UPS AND SHOW UPS



INJURY & DEATH INVESTIGATION

Warrants

- House Search Warrants
- Vehicle Search Warrants
- DNA Warrants
- Court Orders
- 10 day Inventory
- Statement of Facts
- Search Warrant
- Cell Phone Warrants
- Emergency weekend Warrant Temp #



INJURY & DEATH INVESTIGATION

Serving Warrants

- Type own warrant
- Search Warrant
- Statement of Facts
- Contact state attorney
- Contact a judge
- Serve the Warrant
- Crime scene unit
- Consent to Search



Search Warrant sketch



INJURY & DEATH INVESTIGATION

CRIME STOPPERS TIP

INJURY & DEATH INVESTIGATION

MEDICAL EXAMINER

INJURY & DEATH INVESTIGATION

Medico- Legal

- Autopsy
- Collection of Blood
- Collection of Projectiles
- Victims Prints
- Wound identification
- Tool Marks
- Food
- Manner of death
- Cause of Death



INJURY & DEATH INVESTIGATION

Post-Mortem Examination

- Rape Kit
- Fingernail scrapings
- Bite Marks
- DNA Blood Card
- Projectiles
- Clothing
- Diagram
- Print
- Clothing (evidence)

EXEMPLAR, NOT TO BE COPIED OR REPRODUCED

The following information is fictitious it is used only to illustrate the types of information that may be collected as well as one possible format for a medical examiner's report.

Types of information as well as style will vary by agency, local policies, regulations, and laws.

BODY DIAGRAM

Front

Over 50 lacerations & puncture injuries of anterior chest and abdominal wall

Fractures of Ribs & Lungs

Lacerations of Liver & Spleen

Two Mandibles Fractured Displaced Anteriorly

Scapulae Lacerated

5" x 2" Right Hand & Forearm

2 x 3" Right Hand & Forearm

1" x 4" Right Hand

Multiple Small Fractures of Ribs and Lower Extremities

Back

Brain Absent Eyes Displaced Fractured at Optic Nerve Skull Base Fractures Multiple and Facial Bones Green and Skull Fragments Recovered Separately

Two Mandibles Fractured Glenoid Humerus Fractured

Anterior & Posterior Lacerations of Trunk Fractures (Craniated) Proximal Femur & Head Lacerations of Muscles and Soft Tissues

Disseminated Peritoneal Hemorrhage & Peritoneal Abscess (Abscesses)

Large Fracture of Ribs Five ST involving Thoracic vertebral body

Partial Amputation of ST

Eye (Globe)

Decedent's Name John Anderson

Height 72 inches

Weight 185 pounds

Examiner R. B. Miller

Date

Autopsy # ATF-62

OFFICE OF THE CHIEF MEDICAL EXAMINER

INJURY & DEATH INVESTIGATION

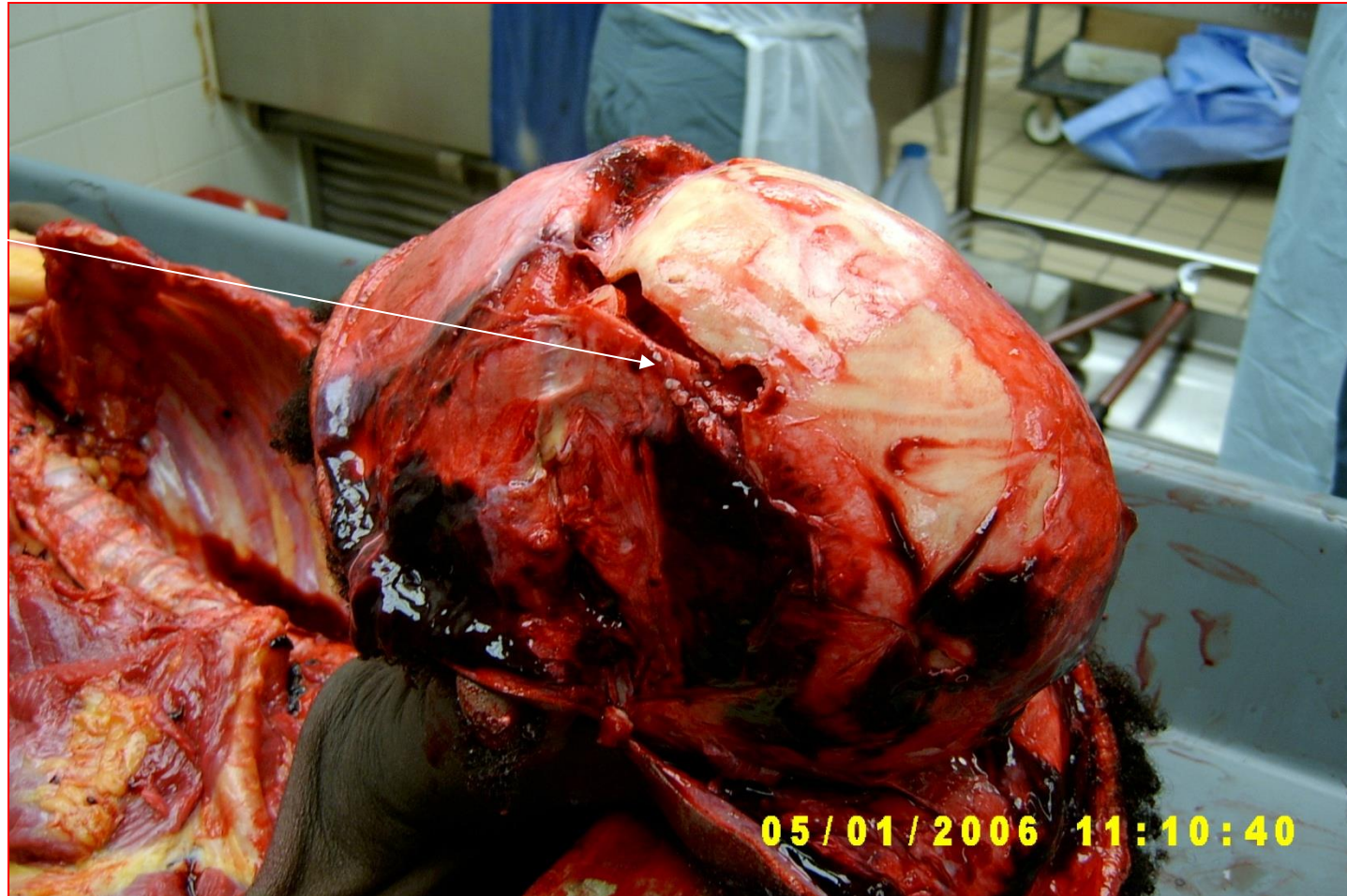
Gunshot



INJURY & DEATH INVESTIGATION

Gun Shot Wounds

Entry



INJURY & DEATH INVESTIGATION

Shotgun Suicide



INJURY & DEATH INVESTIGATION

Shotgun Suicide



INJURY & DEATH INVESTIGATION

Shotgun Wound



TRIGGER
FINGER



INJURY & DEATH INVESTIGATION

Shotgun Blood Spatter



INJURY & DEATH INVESTIGATION

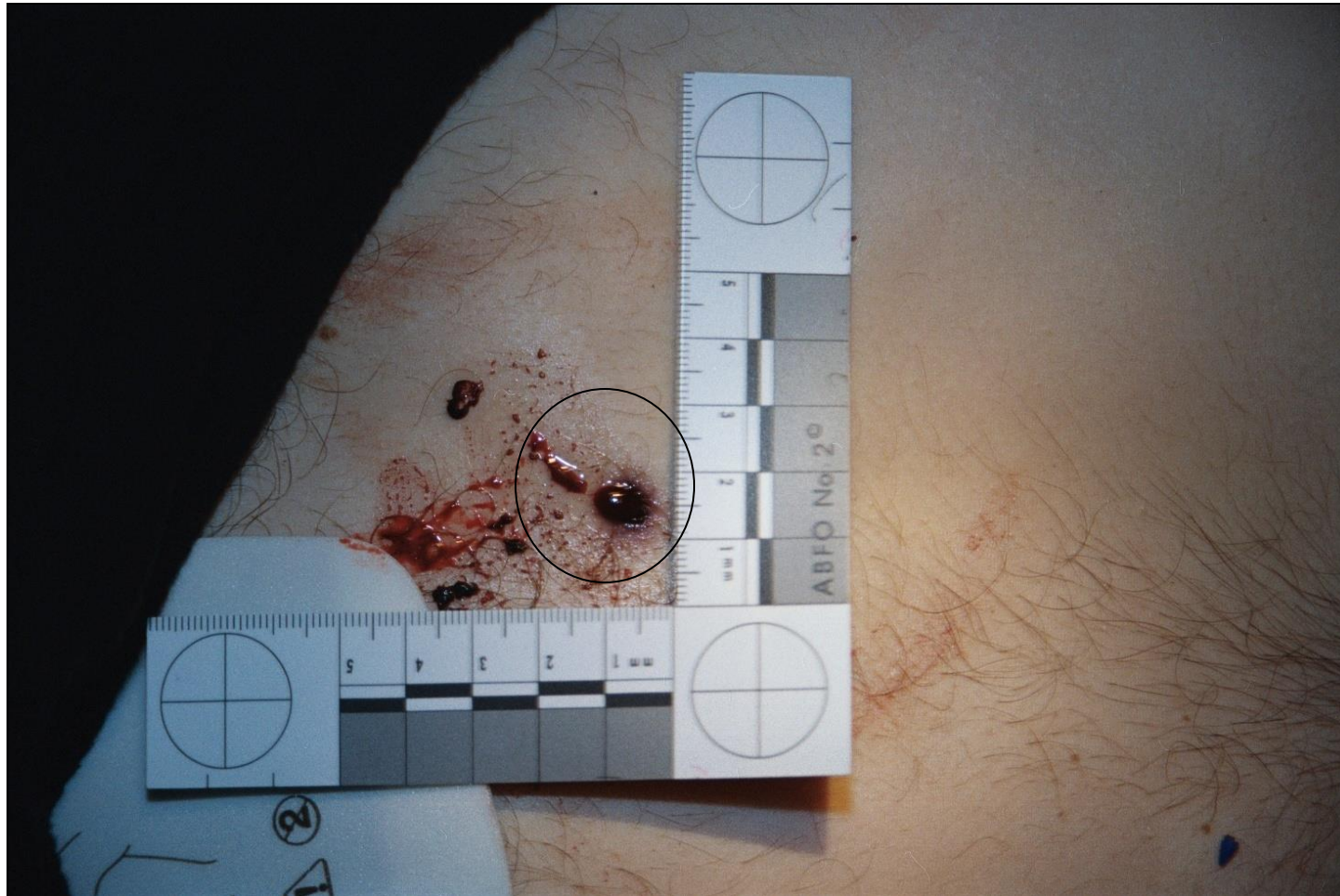
Distance from gun to victim

- Gunshot residue
- Stippling; Approximately 12 inches
- Contact wounds; May see stamp of gun
- Smoke or soot; close but no contact
- Searing; burning of the skin from flame of muzzle



INJURY & DEATH INVESTIGATION

Gunshot wound entry
.25 caliber



INJURY & DEATH INVESTIGATION

Stippling
.38 caliber



INJURY & DEATH INVESTIGATION

.38 caliber
Closer Entry



Entry

INJURY & DEATH INVESTIGATION

Bird Shot



INJURY & DEATH INVESTIGATION

Contact gunshot wound



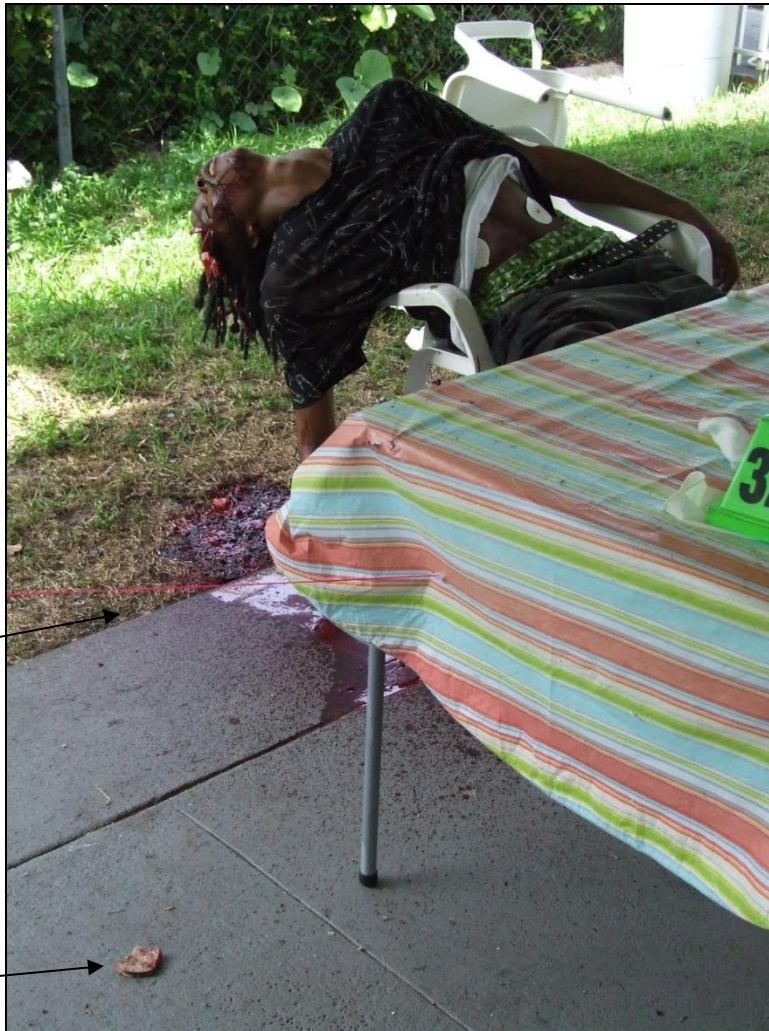
Firearm to
M.E.
Comparison
& Picture

INJURY & DEATH INVESTIGATION

AK 47

Trajectory

Skull



INJURY & DEATH INVESTIGATION

AK 47



INJURY & DEATH INVESTIGATION

Exit Wound AK 47



INJURY & DEATH INVESTIGATION

Bullet trajectory



Exit Gunshot Wounds



INJURY & DEATH INVESTIGATION

Gunshot wound trajectory



BALLISTIC TEST

.380 CAL

7.62 X 39

9MM

SHOTGUN DOUBLE OO BUCK

.40

44 MAGNUM

.45

.357

.223 5.56 X 45

INJURY & DEATH INVESTIGATION

Stab Wounds



INJURY & DEATH INVESTIGATION

Knife wound



INJURY & DEATH INVESTIGATION

stab wounds





INJURY & DEATH INVESTIGATION

Knife Wounds



INJURY & DEATH INVESTIGATION

Blunt Trauma



SUB DURAL
HEMATOMA



INJURY & DEATH INVESTIGATION

Hammer



INJURY & DEATH INVESTIGATION

Shoe Print Impression



INJURY & DEATH INVESTIGATION

Shoe Print



INJURY & DEATH INVESTIGATION

Blood Smear/Transfer



INJURY & DEATH INVESTIGATION

Blood



INJURY & DEATH INVESTIGATION



INJURY & DEATH INVESTIGATION

Blood spatter

Blood

Blood

Blood



INJURY & DEATH INVESTIGATION



Blood

Price \$20

Blood



INJURY & DEATH INVESTIGATION

Shoe Print

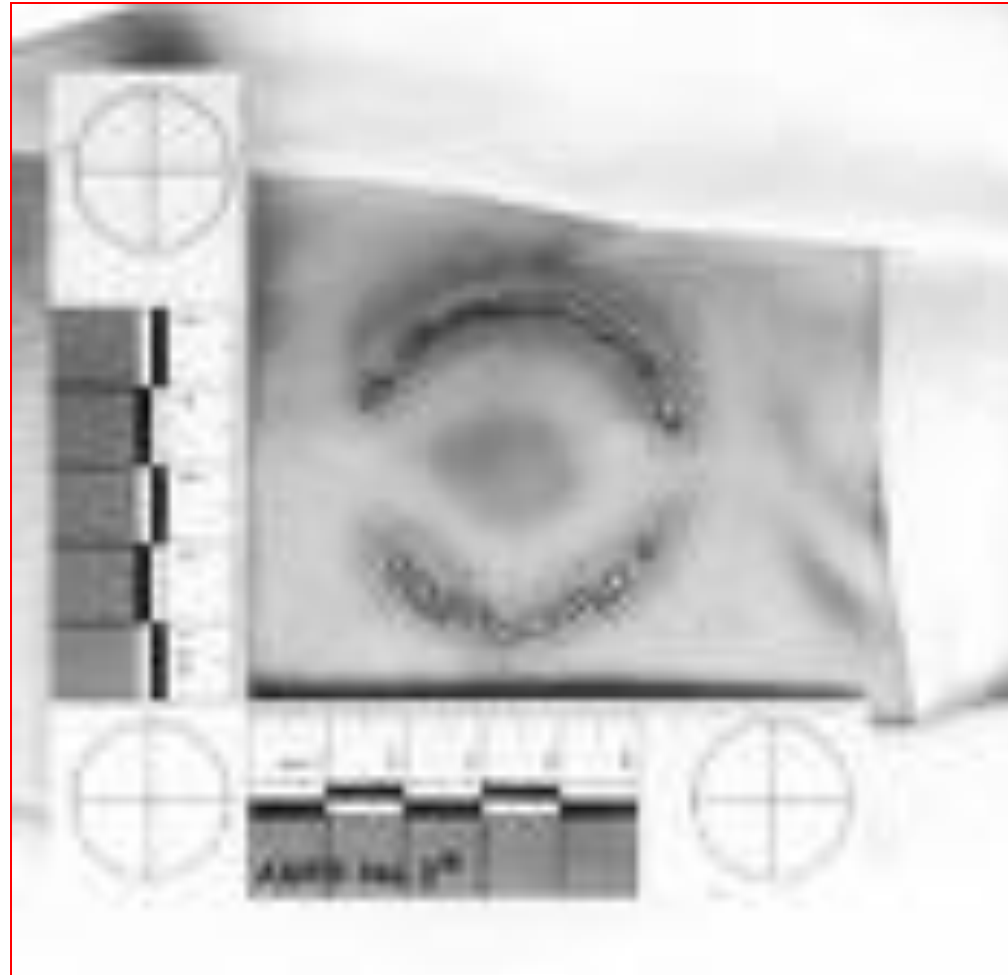


INJURY & DEATH INVESTIGATION

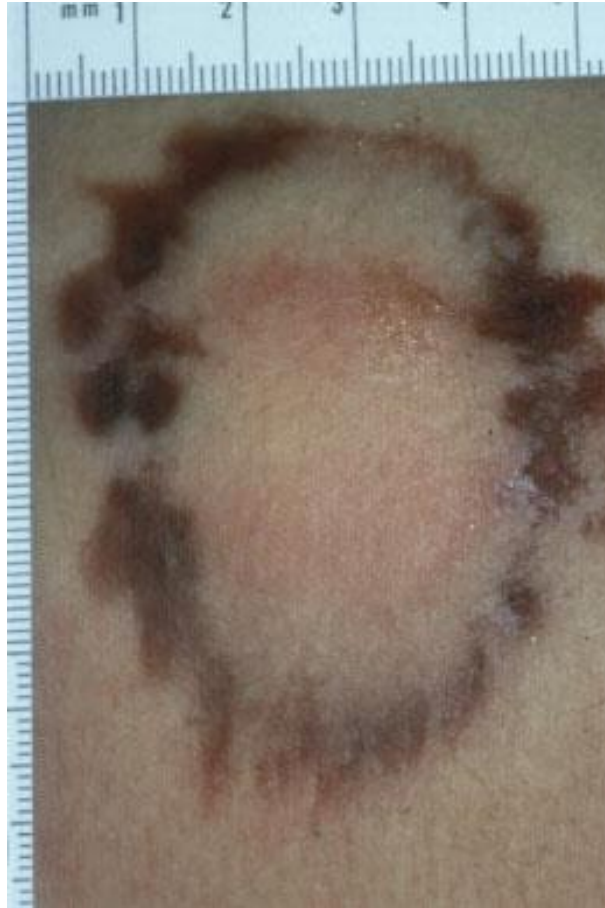
Bite Marks



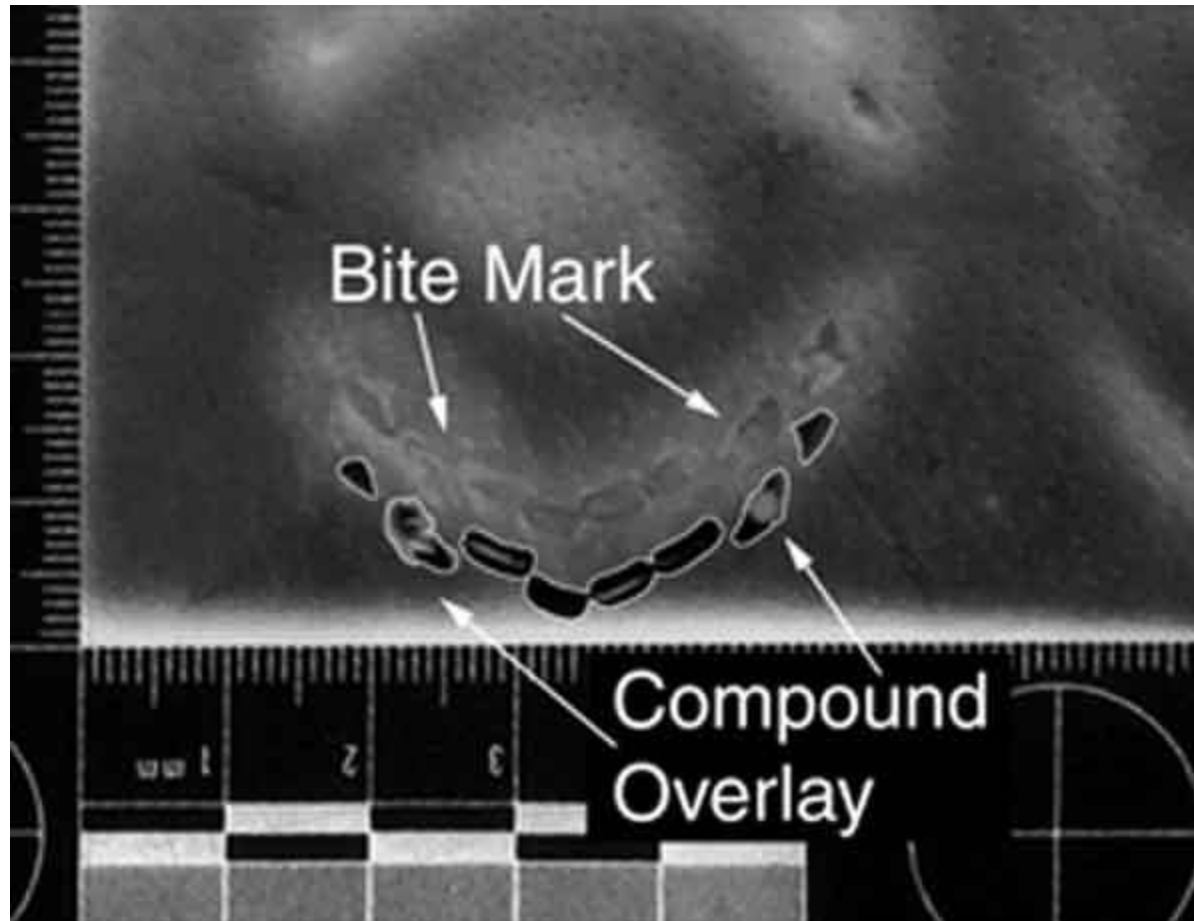
INJURY & DEATH INVESTIGATION



INJURY & DEATH INVESTIGATION



INJURY & DEATH INVESTIGATION



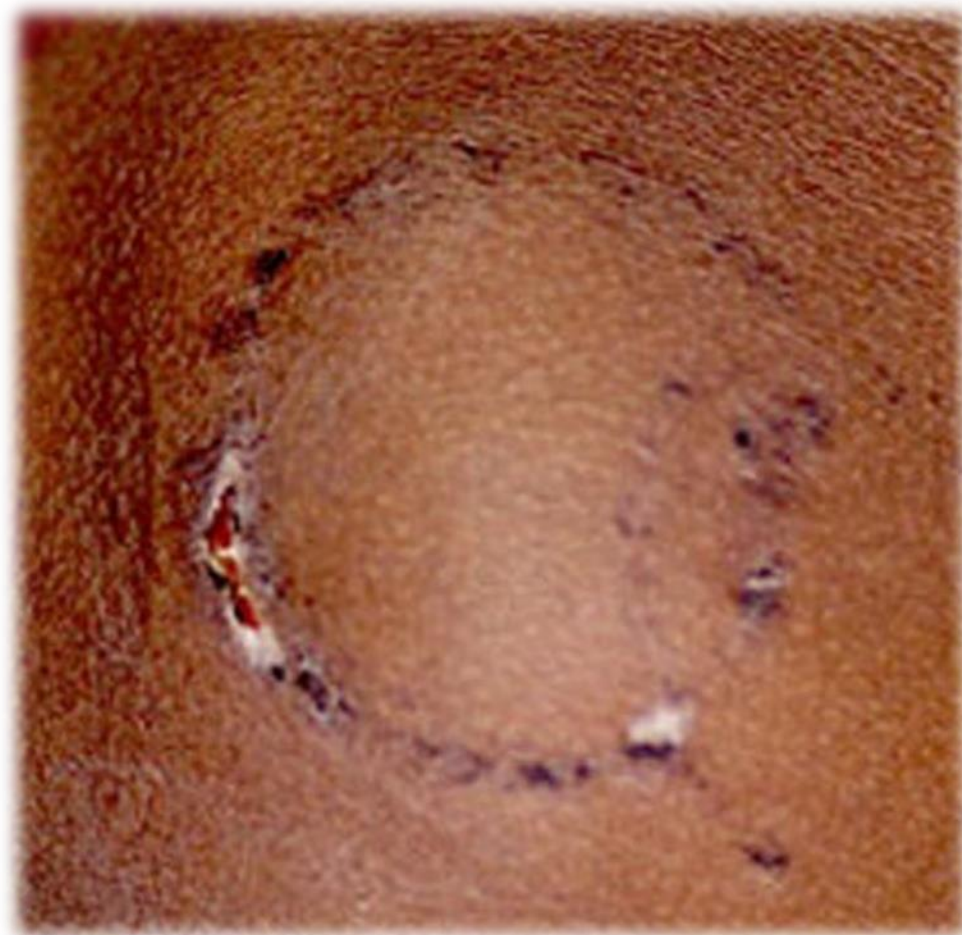
INJURY & DEATH INVESTIGATION

Bite Marks



INJURY & DEATH INVESTIGATION

Bite Mark



INJURY & DEATH INVESTIGATION

Dog Bite Pit bull



INJURY & DEATH INVESTIGATION

Strangulation

ligature



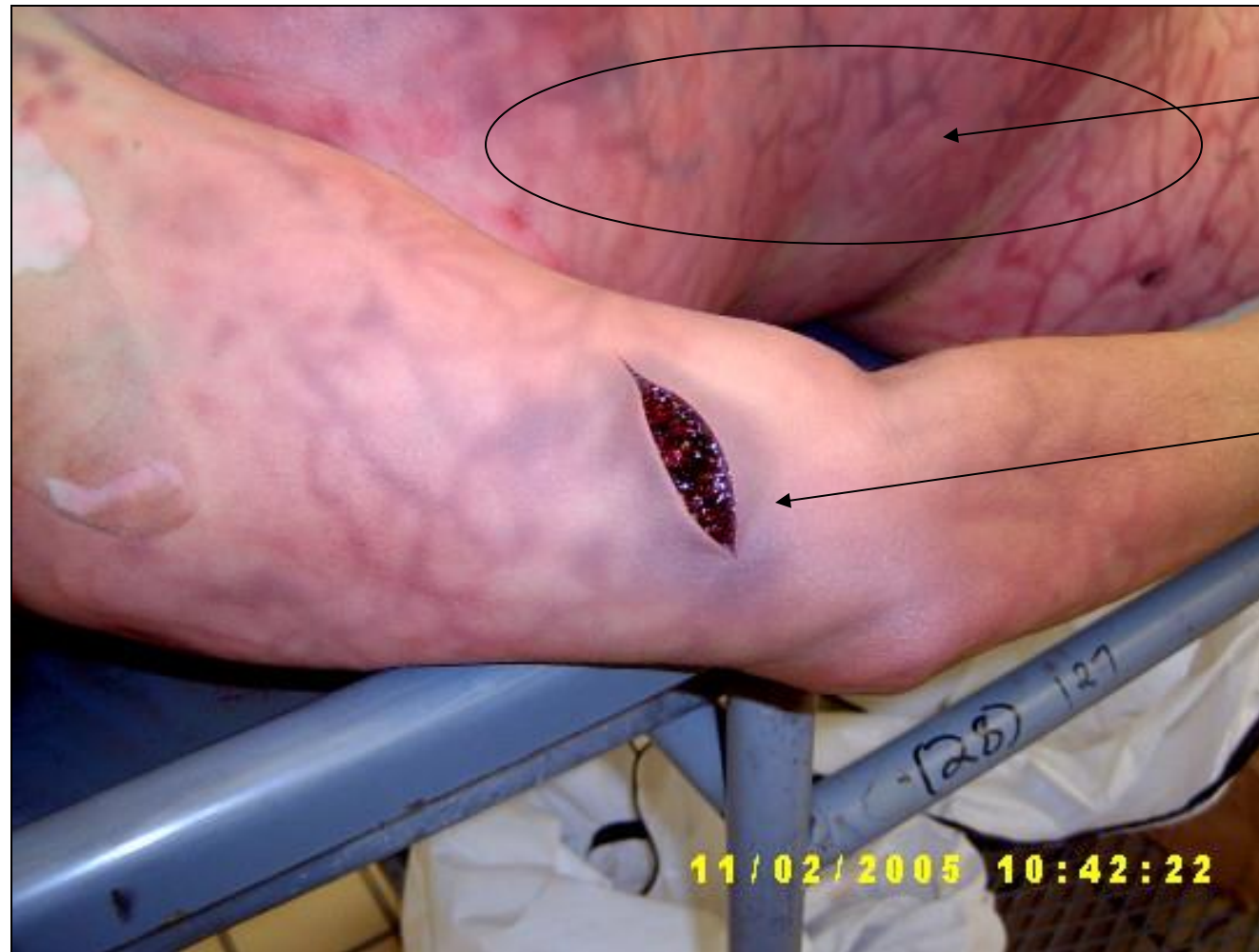
INJURY & DEATH INVESTIGATION

Strangulation / Hemorrhage in eyes



INJURY & DEATH INVESTIGATION

Sexual assault



Marbling

*Internal
bruising*



FINGERNAIL SCRAPINGS



INJURY & DEATH INVESTIGATION

Fires

- Witnesses nearby crime scene
- Fire Inspector
- Lab analysis
- Starter
- Vehicle
- House
- Safety
- Dental records



INJURY & DEATH INVESTIGATION

Vehicle Fire



Blown up Tires

Fuel Starter



INJURY & DEATH INVESTIGATION

Projectile



Projectile



INJURY & DEATH INVESTIGATION



Body wrapped up in bed comforters



Body wrapped up with a blanket



BODY INSIDE OF A BOX



Body wrapped in sheets





ALOR SETAR
KEDAH



BODY WRAPPED IN TARP





Body inside of suite cases



Body and evidence in dumpsters



BODY IN TRUNK OF CAR

GPS
On Star
Rental Car
Red Light Camera
Sun Pass/Tolls
LPR License Plate Reader
Car Washed
Tire treads
Odometer
Radio Station/Volume
Ownership papers



TOW VEHICLES WITH BODIES IN THEM



Crime Scene Clean up



MICHAEL PETERSON

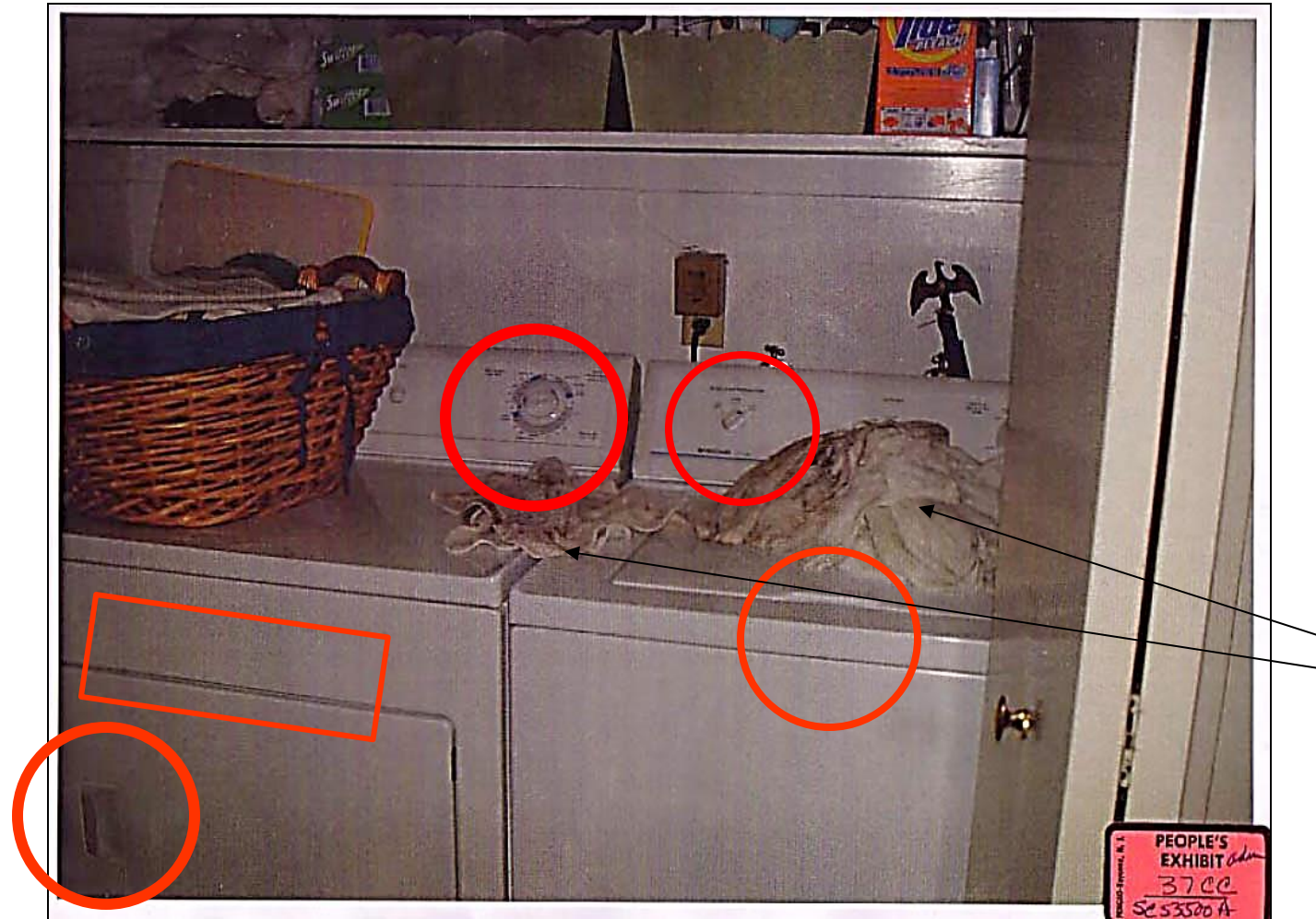


KATHLEEN PETERSON



Durham, North Carolina

Crime Scene Clean Up



INJURY & DEATH INVESTIGATION

Baby Deaths

- S.I.D.S.; SUDI
- Accidental Death
- Scene search
- Preserve pillow and sheets
- Stuffed animals causes
- Heat : SIDS cases
- Childs medical history
- Sibling history
- Last meal; Time of death
- Time police called Vs. Rigor
- Special Victims Unit
- Children and Family Services history



SIDS, SUID, SUDI

Sudden Infant Death Syndrome
Sudden Unexplained Infant Death
Sudden Unexpected death in Infancy

- Physical Abuse
- Unreported Single Incidents
- Battered Baby
- Neglect; dehydration, starvation, no scheduled medical attention care
- 2 to 4 months unexplained Deaths
- 6 months start to get worried, not normal.
- Major Risk After 2-4 months prone sleeping
- More common in winter months
- Maternal smoking during pregnancy
- Eating and Sleeping Habits

Baby Deaths

Offender Profiles

Caregiver

Over emphasizes and volunteers to take care of child

Stepparent, Boyfriend, Alone with child at time of event

Relationship concerns with Mother

Jealousy, Alcohol abuse, Drugs

Mechanism Effect

Crying

Wet Pamper

Throwing up

Social Isolation no support networks (grandmothers)

INJURY & DEATH INVESTIGATION

Victim Advocate

- Funeral Services
- State funds
- Present, on call for families
- Witness protection / relocation
- Counseling



INJURY & DEATH INVESTIGATION

LAZARO SUAREZ MURDER CASE